

ICI SWIR 640 P-Series



The ICI SWIR infrared camera employs a 640x512 Indium Gallium Arsenide focal plane array, allowing the camera to be highly sensitive to energy in the near-infrared (NIR) and shortwave infrared (SWIR) wavebands from 0.9 to 1.7 microns, well beyond the range of silicon CCD Cameras. The ICI SWIR operates on less than 1 watt of power, via a USB 2.0 connection, providing a real time data streamed directly to any desktop, laptop, tablet or embedded system. Windows and Linux software, drivers and SDK are available for any and all custom applications.



Features

- Indium Gallium Arsenide detector
- 640x512 Pixel Array
- 60Hz Frame Rate
- USB 2.0 for Power & Data
- Native Wide Dynamic Range
- Aluminum Enclosure
- Small Size
- Light Weight
- Low Power

Applications

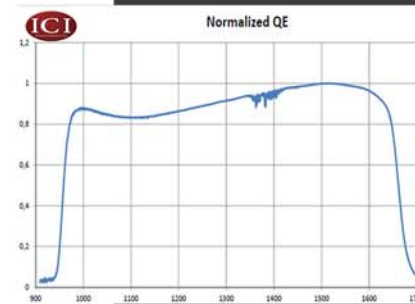
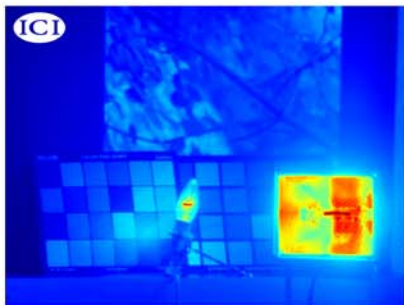
- UAV Integration
- Robotics
- Industrial NIR Imaging
- Laser Instrumentation
- Aerial Imaging
- Firefighting
- Scientific Research
- IR reflectography

Lens & Software Options

- Lens options upon request
- C Lens Mount
- IR Flash Research Software
- Windows 32-bit SDK
- Linux SDK (x86, x64 and ARM)

Specifications

- 15µm FPA (InGaAs) 640x512
- 900nm-1.7µm Spectral Response
- 14 bit Dynamic Range
- 8.52x10⁹ photons/cm²-s NEI (Noise Equivalent Irradiance)
- >140dB dynamic range
- >99% Operability
- Up to 60 FPS
- -40C to 90C Oper. Range
- 75G/4G Shock/Vibration
- 46x46x29.5 - without lens (HxWxD +/- .5mm)
- <120 Grams - without lens



Infrared Cameras Inc

2105 W. Cardinal Dr.
 Beaumont, TX 77705
 (409) 861-0788 Phone
 (866) 861-0788 Toll Free

