

Infrared Cameras Inc.

ICI Reporter *Professional Thermal Image Analysis Software*

ICI Reporter Software is a professional report writing software package that gives an inspector the ability to create exceptional reports for both field and lab testing. It features a number of tools that make post process analysis simple, with maximum flexibility.

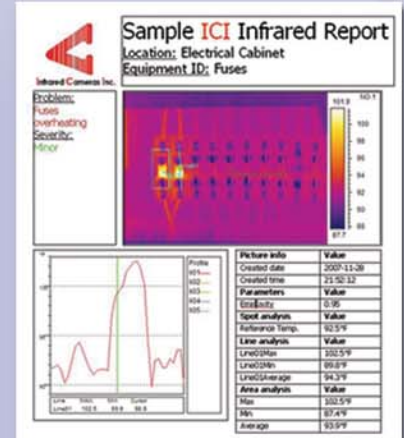
ICI Reporter Features:

- Multiple images can be placed on a single page with corresponding temperature data accompanying each image.
- Images can be resized by simply grabbing the corner of the image and dragging the image to fill the entire page or reducing the image to the size of a thumbnail.
- Images, text boxes, line profiles, 3D profiles and tables can all be resized by grabbing the box corner and expanding it to the desired dimension.
- Images, text boxes, line profiles, 3D profiles and tables can all be picked up and placed anywhere on the report page.
- Up to 99 temperature measurement points can be output from the thermal image.
- JPEG file format is instantly readable by any PC standard explorer program with previews before importing the captured image into ICI Reporter.
- 11 Palettes are available to customize the user's thermal images after downloading.
- Image can be adjusted using auto gain or manual level and span.
- Temperature meter measures temperatures anywhere on the downloaded image by placing a spot cursor directly on any pixel point in the image.
- Text boxes allow any format text or typestyle to be placed in a resizable box for nearly unlimited reporting comments.
- Emissivity, distance, relative humidity and background temperature correction.
- 2 Isotherms to cover or "color-in" a user-specified span of temperature.
- Up to 10 line profiles with temperature data from each individual image. These color coded profiles become more detailed as the user enlarges the line profile box.
- 3D modeling gives the user a three dimensional framework for various temperatures within the image. This 3D model can be manipulated by grabbing the model with the mouse and rotating it on the images X or Y axis.
- Multiple images can be placed together to create a mosaic or to build one large image out of a group of smaller images. Temperature data can be output from each of these images.
- Full use of graphic tools to modify the overall appearance (color, line width, text color) of the report page.
- ICI Reporter exports directly to MS Word.

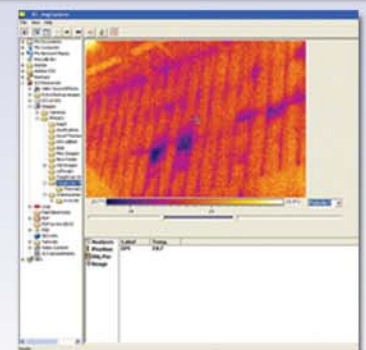
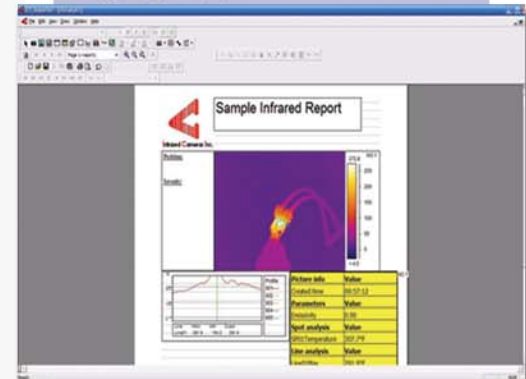
ICI Reporter is compatible with the ICI ToughCam P-Series, ICI ToughCam EL and ICI DuraCam 320 P-Series.



InfraredCamerasInc.com
(866) 861-0788
(409) 861-0788



Above: Sample IR Reporter Report
Below: IR Reporter Professional Thermal Image Analysis Software



Above: ICI Image Explorer allows you to browse through your thermal images.

