

Above Images from left to right: Studs in Wall, Outside of House, and Circuit Breaker

The ToughCam Scientific portable thermal imager offers outstanding image quality & temperature measurement performance in an affordable, rugged & easy to use infrared camera.

Features

- Affordable
- Single point temperature measurement
- 270° LCD display
- Built in high-resolution color 2.8" LCD
- Laser pointer

Applications

- Electrical inspections
- Mechanical surveys
- Building inspections
- Flat roof surveys
- Process equipment monitoring
- Research & development
- Medical & veterinary imaging



- LWIR Long Wave
- ICI Reporter Software Included
- 1 Year Warranty
- 160 x 120 Resolution



ToughCam



ToughCam

Performance

| | |
|---------------------------|---|
| Detector | Microbolometer 160 X 120 |
| Accuracy | ±2°C or ±2% of reading, Whichever is greater |
| Thermal Sensitivity | 0.12°C @ 30°C |
| Spectral Range | 7.2 -13.5 μm |
| Field of View | 12° x 9° |
| Spatial resolution (IFOV) | 1.3 mrad |
| Minimum focus distance | 0.3m |
| Temperature Range | -20°C to +350°C (-4°F to + 662°F) optional 500°C and 1000°C range |
| Temperature Units | C, F or K |

Outputs

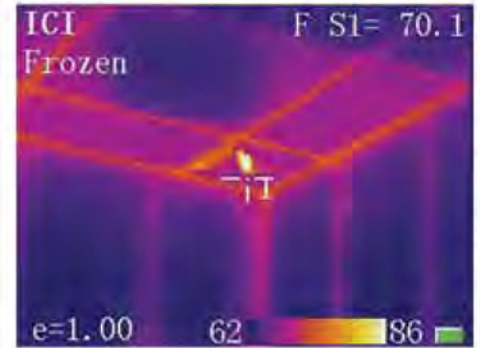
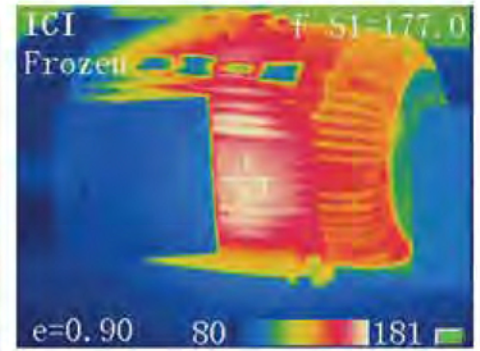
| | |
|-----------------|--|
| Image Frequency | 50Hz |
| Image Display | High resolution color 2.8" LCD |
| Laser Pointer | Class 2, 1mw / 635nm red |
| Interfaces | USB - Image, measurement data transfer, component video output |

Power

| | |
|---------|---|
| Power | 10~14 V - Power supply provided |
| Battery | Rechargeable li-ion, 3 hours continuous operation |

Environmental / Mechanical

| | |
|--------------------------|--|
| Operating Temperature | -15°C to +50°C (-5°F to 122°F) |
| Storage Temperature | -25°C to +60°C (-13°F to 140°F) |
| Environmental Protection | IP 54 |
| Size | 10.6" x 3.9" x 2.95" |
| Weight | 1.3 lb.s (including battery and lens) |
| Palettes | 3 palettes including color and blk and white |
| Tripod Mount | Standard ¼"-20 |



©2010 Infrared Cameras Inc. All Rights Reserved

1. ICI Reporter gives a user the ability to overlay thermal images on a visible light image. Reporter can measure any point or area on this image using a point, line or area measurement feature.

2. ICI Reporter also provides a 3 dimensional profile of the thermal image.

3. ICI Reporter allows for to view temperatures across an area with up to 10 line profiles.

4. Temperature values are immediately dropped into a result table when the user places a measurement point or area on the thermal image.

5. Your final report is easily exported to a word document.

| Picture info | Value |
|--------------|------------|
| Created date | 2009-01-15 |
| Created time | 06:30:36 |
| Spot | Value |
| Point01Temp | 113.1°F |
| Point02Temp | 110.8°F |
| Line | Value |
| Line01Max | 112.3°F |
| Line01Min | 102.5°F |
| Line01Averag | 108.3°F |

Above: ICI Reporter Sample Overlay Image with Temperature Measurement, 3D Profile, and Line Profile

Accuracy

This ergonomically designed infrared camera is based on an uncooled microbolometer core that provides crisp imagery and accurate temperature measurements. Adjustable emissivity input and ambient temperature compensation insures accurate temperature readings.

Long life battery

A long life rechargeable Lithium-ion battery pack operates the camera up to three hours.

Laser pointer

There is a built in laser pointer that facilitates identification of the equipment under inspection.

Temperature measurement

The ToughCam EL Scientific uses a single point temperature measurement.

Standard Accessories

These include a heavy duty carrying case with shoulder strap, two batteries (Li-Ion, rechargeable), battery charger, lens cap, and adumbral cover. The ToughCam EL also comes standard with professional analysis software (IR Reporter).

Visit us online: <http://www.InfraredCamerasInc.com>
1(866)861-0788 USA 1(409)861-0788 Intl