



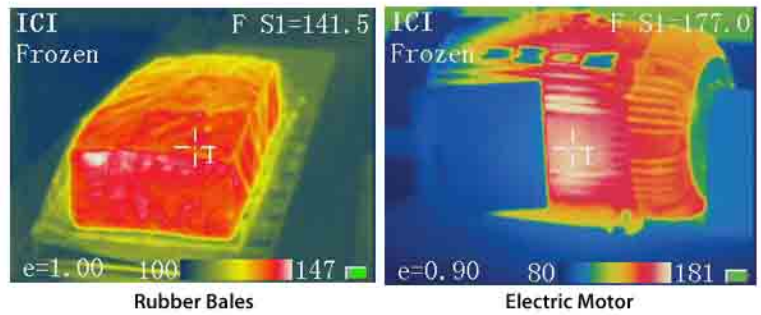
ToughCam EL

Features

- Affordable
- Single point temperature measurement
- 270° LCD display
- Built in high-resolution color 2.8" LCD
- Laser pointer

Applications

- Electrical inspections
- Mechanical surveys
- Building inspections
- Flat roof surveys
- Process equipment monitoring
- Research & development
- Medical & veterinary imaging

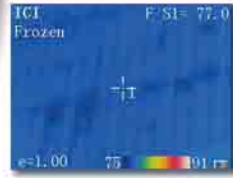
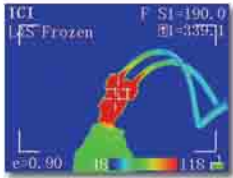


The new ToughCam EL portable thermal imager offers outstanding image quality and temperature measurement performance in an affordable, rugged and easy to use infrared camera.



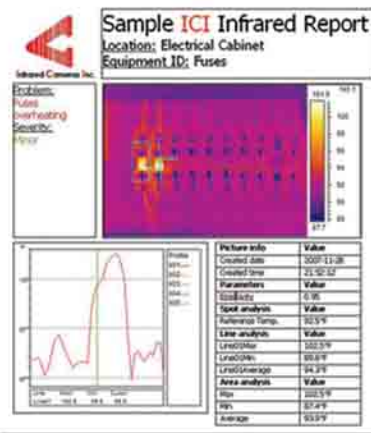
ToughCam EL

ToughCam EL

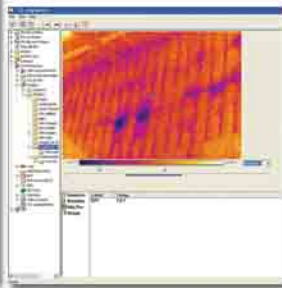


Transformer Bushings

Coliseum wall, distance 150 ft.



Left: Prepare professional reports with IR Reporter software.
Below: Use ICI Explorer software to browse thermal images.



ToughCam EL

Performance

Detector	Microbolometer 160 X 120
Accuracy	±2°C or ±2% of reading, Whichever is greater
Thermal Sensitivity	0.12°C @ 30°C
Spectral Range	7.2 -13.5 μm
Field of View	12° x 9°
Spatial resolution (IFOV)	1.3 mrad
Minimum focus distance	0.3m
Temperature Range	-20°C to +250°C (-4°F to + 482°F)
Temperature Units	C, F or K

Outputs

Image Frequency	50Hz
Image Display	High resolution color 2.8" LCD
Laser Pointer	Class 2, 1mw / 635nm red
Interfaces	USB - Image, measurement data transfer

Power

Power	10~14 V - Power supply provided
Battery	Rechargeable li-ion, 3 hours continuous operation

Environmental / Mechanical

Operating Temperature	-15°C to +50°C (-5°F to 122°F)
Storage Temperature	-25°C to +60°C (-13°F to 140°F)
Environmental Protection	IP 54
Size	10.6" x 3.9" x 2.95"
Weight	1.3 lbs. (including battery and lens)
Palettes	3 palettes including color and blk and white
Tripod Mount	Standard ¼"-20

Accuracy

This ergonomically designed infrared camera is based on an uncooled microbolometer core that provides crisp imagery and accurate temperature measurements. Adjustable emissivity input and ambient temperature compensation insures accurate temperature readings.

Long life battery

A long life rechargeable Lithium-ion battery pack operates the camera up to three hours.

Laser pointer

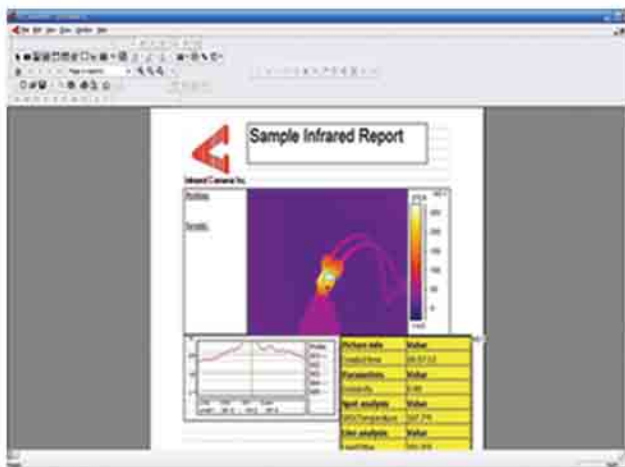
There is a built in laser pointer that facilitates identification of the equipment under inspection.

Temperature measurement

The ToughCam EL uses a single point temperature measurement.

Standard Accessories

These include a heavy duty carrying case with shoulder strap, two batteries (Li-Ion, rechargeable), battery charger, lens cap, and adumbral cover. The ToughCam EL also comes standard with professional analysis software (IR Reporter).



Above: IR Reporter Software with sample report