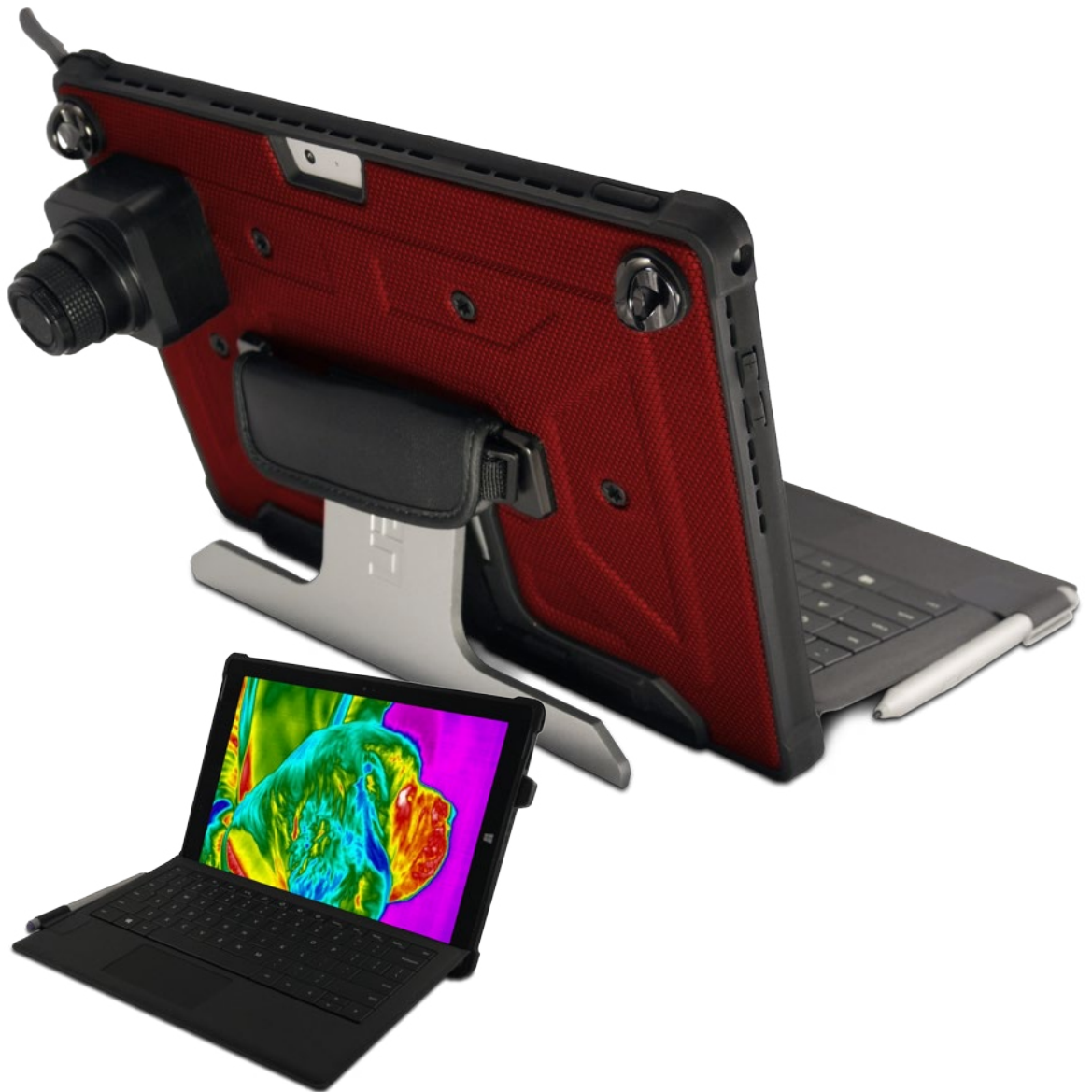




IR Pad 320 Veterinary



INFRARED CAMERAS INC.
2105 W. Cardinal Dr.
Beaumont, TX 77705

Phone: (409) 861-0788
Toll Free: (866) 861-0788

We are IR™

ICI IR-Pad 320 Veterinary

The ICI IR-Pad 320 Veterinary infrared camera/tablet system is a winning combination for capturing high quality images. Featuring a custom calibration specifically suited for veterinarian applications, the IR-Pad 320 is useful in preventative and ongoing treatment of animals and pets. This ultra rugged IR-Pad Veterinary infrared camera utilizes a 320x240 high resolution detector to capture all of your thermal images, perfect for Offices, Field Work, or House Calls. The design is unbeatable and built specifically for all needs that a veterinary thermographer may encounter in their critical business. Includes our IR Flash software.



Features

- IR Camera + Tablet System
- Unparalleled Image Resolution
- Widescreen Viewing
- Heavy Duty Tablet Case
- Bluetooth Connectivity
- Indoor/Outdoor Use
- Adjustable Neckstrap and Stand
- IR Flash Touch Software
- Analysis/Report Building Software
- Portable
- 8 Palettes including B&W

Applications

- Fever Screening
- Injury Discovery
- Pain/ Inflammation
- Equine/ Cattle Health
- Dermatology
- Scientific Research

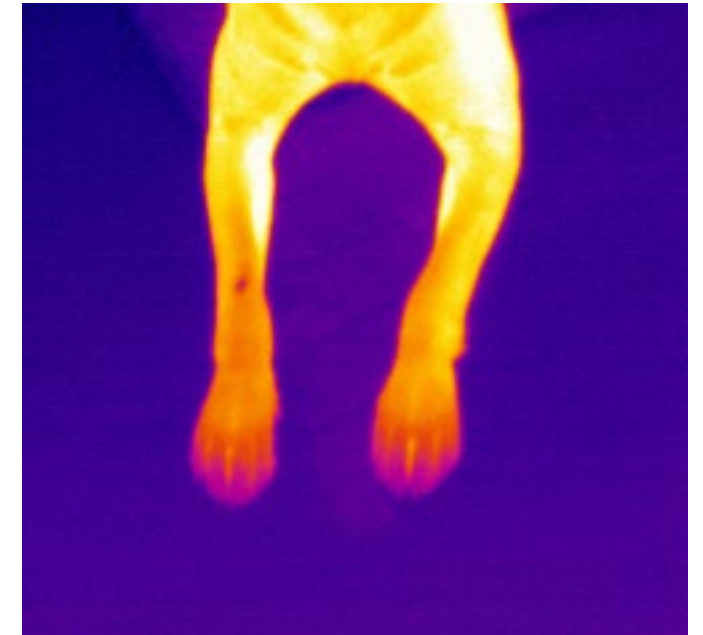
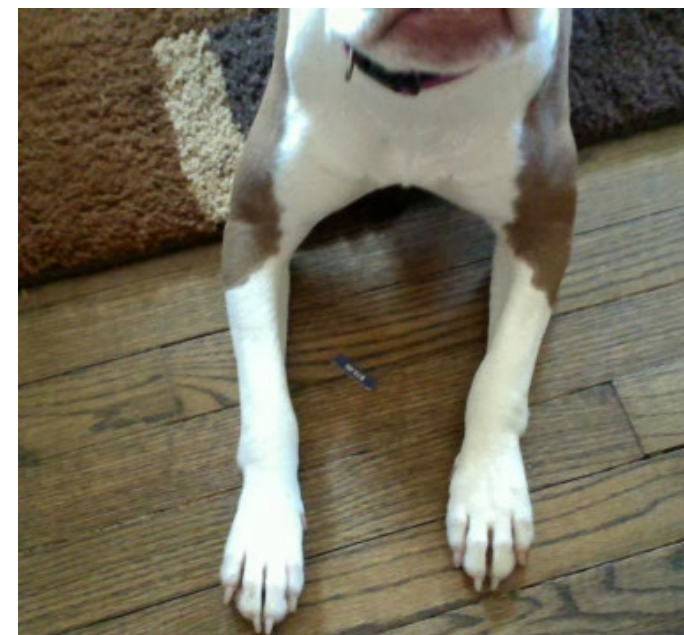
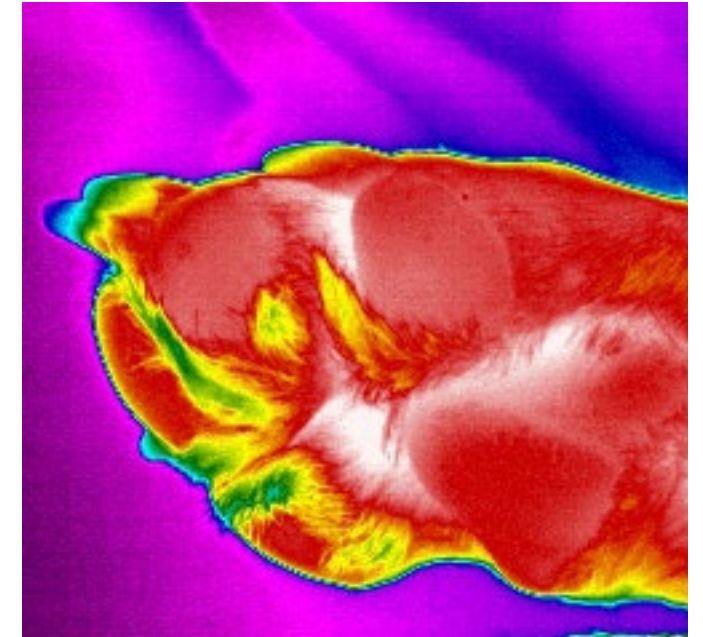
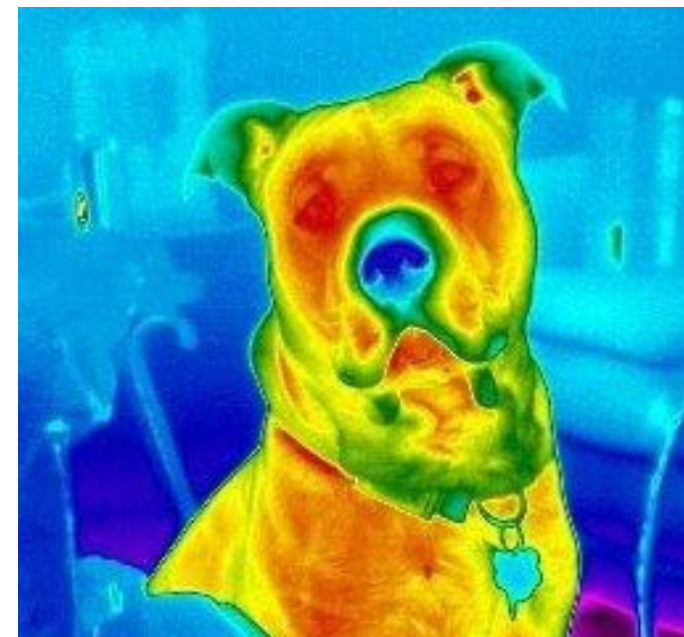
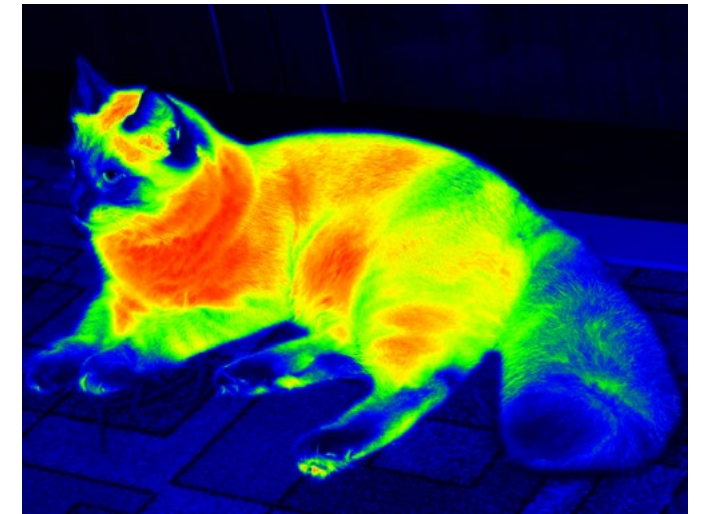
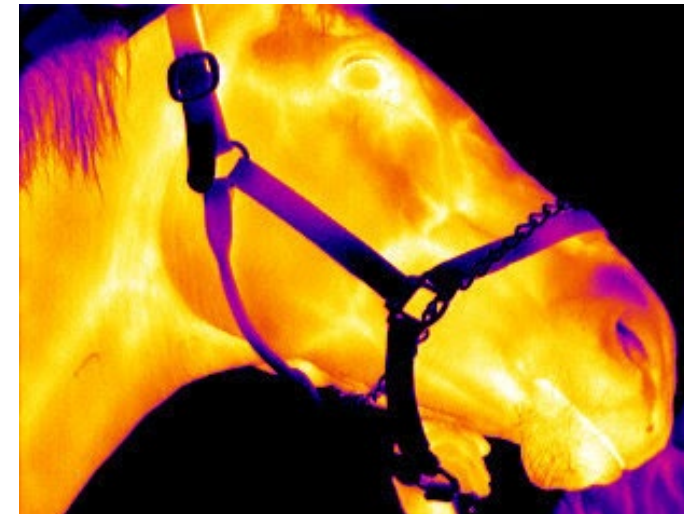
Specifications

- **Detector Array:** UFPA (VOx)
- **Pixel Pitch:** 17µm
- **Pixel Resolution:** 320x240
- **Spectral Band:** 7µm-14µm
- **NETD:** <0.02°C at 30°C
- **Frame Rate:** 60Hz P-Series or 9Hz S-Series
- **Dynamic Range:** 14 bit
- **Temp Range:** 0°C to 70°C
- **Oper. Range:** -40°C to 80°C
- **Accuracy:** +/- 1°C
- **Pixel Operability:** >99%
- 75G Shock / 4G Vibration
- **Dimensions:** 8.25"x12.25"x0.75" - w/o lens (HxWxD +/- .25")
- **Weight:** 3lbs 1.3 oz
- USB 2.0 for Power & Data
- USB, HD Video Out
- Built in Shutter
- Internal NUC
- ICI IR Flash Software

- Integration w/IR Flash Touch
- Analysis/Report Building Software
- **Screen Size:** 12 inches
- **Screen Resolution:** 2160x1440 16:9 (widescreen)
- **Processor:** 4th Gen Intel Core i5
- **Storage:** 128GB
- **RAM:** 4GB
- **Touch:** Multi-touch
- **Wireless:** Wi-Fi 802.11ac/802.11 a/b/g/n
- Bluetooth® 4.0 Low Energy
- Digital Compass
- Windows 10 Pro
- 5MP Rear Facing Camera
- 5MP Front Facing Camera
- Stereo Microphone
- Stereo Speakers w/ Dolby™ Sound
- Accelerometer
- Gyroscope
- Magnetometer
- Surface Pen
- E-Mail

Options & Accessories

- 5mm Fixed Focus Lens (58x44.5 FOV, +35 grams)
- 8mm Fixed Focus Lens (40x30 FOV, +40 grams)
- 9mm Fixed Focus Lens (69x56 FOV, +40 grams)
- 12.5mm Manual Focus Lens (50x37.5 FOV, +64grams)
- 13mm Fixed Focus Lens (45x37 FOV, +45 grams)
- 19mm Fixed Focus Lens (32x26 FOV, +25grams)
- 25mm Fixed Focus Lens (25x20 FOV, +50grams)
- 33mm Manual Focus Lens (20x15 FOV, +100grams)
- 35mm Fixed Focus Lens (18x14 FOV, +100grams)
- 50mm Fixed Focus Lens (12.4x9.9 FOV, 230grams)
- 60mm Fixed Focus Lens (10.4x8.3 FOV, 460grams)
- 100mm Fixed Focus Lens (6.2x5 FOV, 460grams)



Visual

Infrared